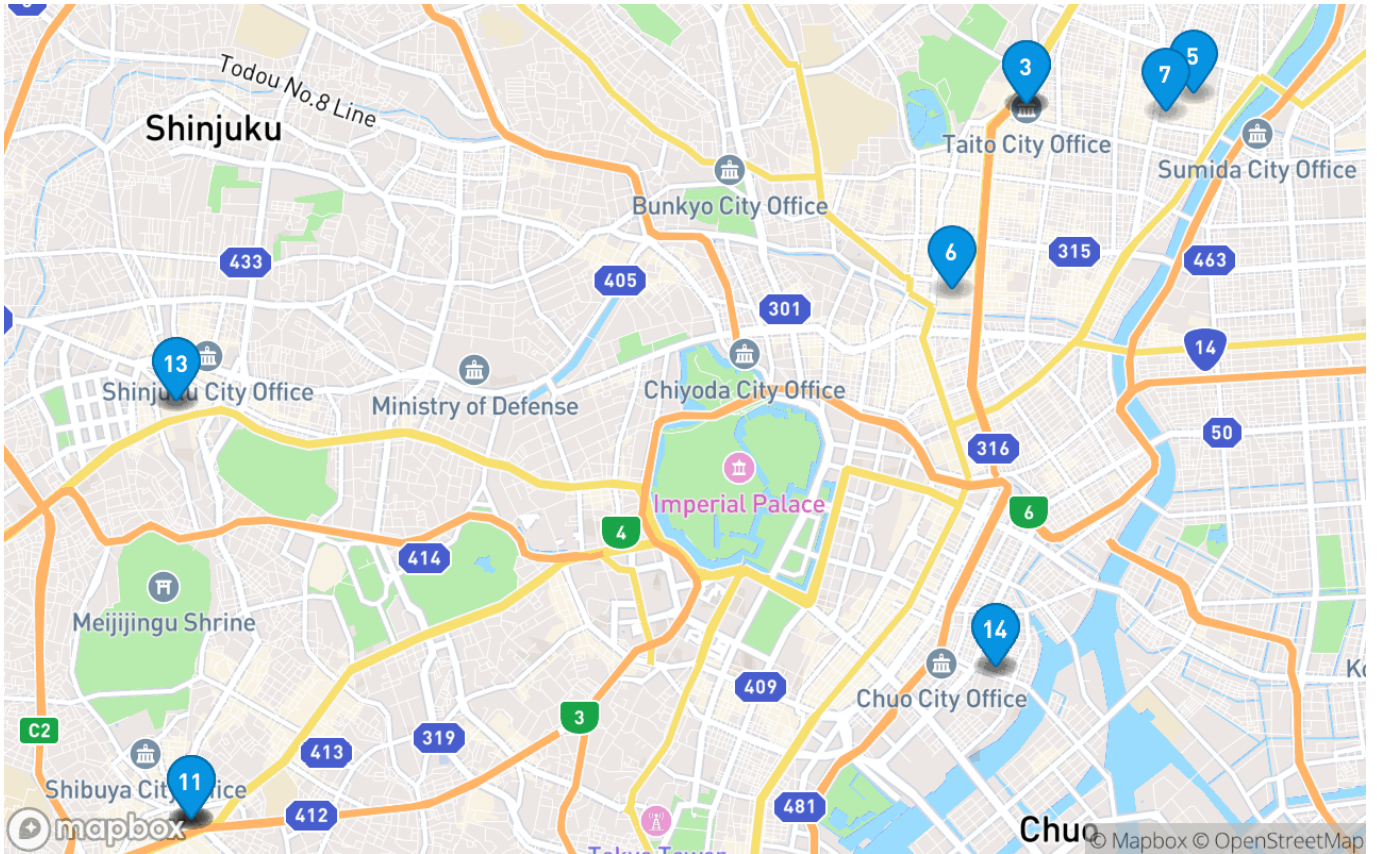


TRIP PLANNER



Tokyo, Japan Itinerary

Trip Type: Vacation / Holiday

Trip Duration: 5 Days

Travel Group: Solo

Interests & Activities: Food & Drink Culture, Hidden Gems

Traveling with Pets: Yes

Month of Travel: April

Preferred Travel Pace: Balanced

Budget Level: Mid-range

Day 1: Arrival in Tokyo

Morning: Arrival and Settle In

- Check into your accommodation that is pet-friendly, ensuring both you and your pet are comfortable.
- Spend some time unpacking and letting your pet acclimate to the new environment.

Estimated Cost: \$150 (Accommodation)

Afternoon: Explore Ueno Park & Ameyoko Market

- Stroll through **Ueno Park**, where cherry blossoms bloom beautifully in April. Enjoy the vibrant atmosphere filled with locals and tourists alike, taking in the sights of the park's ponds and museums.
- Head to **Ameyoko Market** for a unique culinary experience. This bustling street market is famous for its fresh seafood, snacks, and sweets. Sample some delicious **takoyaki** (octopus balls) or **yakitori** (grilled chicken skewers) while browsing through the various stalls.



Location: [1](#) — [Google Maps](#) [Apple Maps](#) [Gaode Maps \(App\)](#)



Location: [2](#) — [Google Maps](#) [Apple Maps](#) [Gaode Maps \(App\)](#)

Estimated Cost: \$20 (Food and Snacks)

Evening: Dinner at a Local Izakaya

- Visit a local **izakaya**, a Japanese-style pub, for dinner. Experience a variety of small dishes, from **sashimi** to **edamame**, paired with a refreshing Japanese beer or sake. The lively atmosphere is perfect for mingling and enjoying traditional Japanese hospitality.



Location: [3](#) — [Google Maps](#) [Apple Maps](#) [Gaode Maps \(App\)](#)

Estimated Cost: \$40 (Dinner)

Checklist:

- Comfortable walking shoes
- Pet essentials (water, snacks, leash)
- Local currency

Day 2: Traditional and Modern Tokyo

Morning: Tsukiji Outer Market

- Start your day at the **Tsukiji Outer Market**, where you can delight in fresh seafood and local delicacies. Try some sushi or sashimi for breakfast, and explore the stalls selling everything from pickled vegetables to kitchenware.



Location: 4 — [Google Maps](#) [Apple Maps](#) [Gaode Maps \(App\)](#)

Estimated Cost: \$25 (Breakfast)

Afternoon: Asakusa and Senso-ji Temple

- After breakfast, head to **Asakusa** to visit **Senso-ji Temple**, Tokyo's oldest temple. Walk through the iconic **Kaminarimon Gate** and browse the shops on **Nakamise Street** for traditional snacks and souvenirs. Don't forget to take in the serene beauty of the temple grounds.



Location: 5 — [Google Maps](#) [Apple Maps](#) [Gaode Maps \(App\)](#)

Estimated Cost: Free

Evening: Explore Akihabara

- In the evening, dive into the otaku culture at **Akihabara**. Visit themed cafes, shops, and arcades. Consider enjoying dinner at a **Maid Cafe**, where you can experience whimsical service and unique themed dishes.



Location: 6 — [Google Maps](#) [Apple Maps](#) [Gaode Maps \(App\)](#)

Estimated Cost: \$60 (Dinner & Activities)

Checklist:

- Camera for photos
 - Pet essentials (water, snacks, leash)
 - Comfortable attire
-

Day 3: A Taste of Local Culture

Morning: Cooking Class

- Join a local cooking class to learn how to make traditional Japanese dishes, such as **ramen** or **sushi**. This hands-on experience will allow you to engage with local chefs and understand the intricacies of Japanese cuisine. Your pet may accompany you if the venue allows.



Location: 7 — [📍 Google Maps](#) [🍏 Apple Maps](#) [📍 Gaode Maps \(App\)](#)

Estimated Cost: \$90 (Class Fee)

Afternoon: Visit Harajuku and Yoyogi Park

- After your cooking class, head to **Harajuku** to explore its trendy shops and unique fashion culture. Don't miss **Takeshita Street** for quirky boutiques and delicious crepes.
- Spend some relaxing time in **Yoyogi Park**, where you can unwind and perhaps have a picnic with some snacks from Harajuku.



Location: 8 — [📍 Google Maps](#) [🍏 Apple Maps](#) [📍 Gaode Maps \(App\)](#)

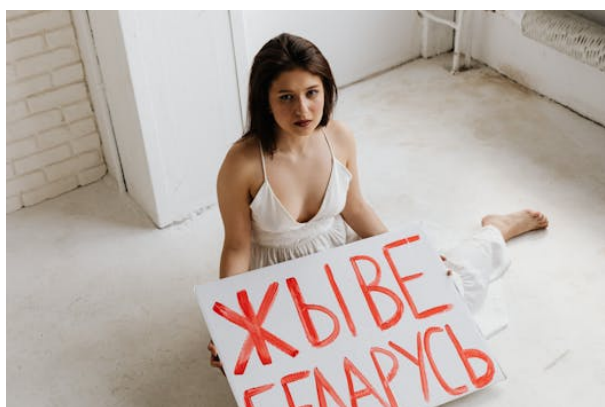


Location: [9](#) — [Google Maps](#) [Apple Maps](#) [Gaode Maps \(App\)](#)

Estimated Cost: \$30 (Snacks & Shopping)

Evening: Dinner at a Hidden Gem

- For dinner, seek out a hidden gem ramen shop that's loved by locals. Enjoy a steaming bowl of **tonkotsu ramen** with rich broth and tender pork, served with a side of **gyoza** (dumplings).



Location: [10](#) — [Google Maps](#) [Apple Maps](#) [Gaode Maps \(App\)](#)

Estimated Cost: \$25 (Dinner)

Checklist:

- Notebook for recipes
- Pet essentials (water, leash)

- Local currency
-

Day 4: Cultural Immersion

Morning: Visit Meiji Shrine

- Explore the tranquil **Meiji Shrine**, dedicated to Emperor Meiji and Empress Shoken. Walk through the lush forested paths leading to the shrine and participate in a traditional purification ritual.



Location: [11](#) — [Google Maps](#) [Apple Maps](#) [Gaode Maps \(App\)](#)

Estimated Cost: Free

Afternoon: Explore Shinjuku Gyoen National Garden

- After the shrine, visit **Shinjuku Gyoen**, a spacious park known for its picturesque gardens and cherry blossoms in April. Pack a light lunch or grab a bento box from a nearby convenience store to enjoy in the serene surroundings.



Location: [12](#) — [Google Maps](#) [Apple Maps](#) [Gaode Maps \(App\)](#)

Estimated Cost: \$10 (Entry Fee)

Evening: Nightlife in Shinjuku

- Experience the vibrant nightlife of **Shinjuku**. Explore **Omoide Yokochō**, known as “Memory Lane,” for small izakayas serving yakitori and other local dishes. Sample different foods and soak in the lively atmosphere.



Location: [13](#) — [Google Maps](#) [Apple Maps](#) [Gaode Maps \(App\)](#)

Estimated Cost: \$40 (Dinner)

Checklist:

- Comfortable walking shoes
- Pet essentials (water, snacks, leash)

- Local currency
-

Day 5: Departure

Morning: Last-Minute Shopping in Ginza

- Spend your final morning in **Ginza**, Tokyo's upscale shopping district. Browse luxury boutiques and department stores. Stop by a local cafe for a final taste of matcha latte or **melon bread**.



Location: [14](#) — [Google Maps](#) [Apple Maps](#) [Gaode Maps \(App\)](#)

Estimated Cost: \$30 (Snacks & Shopping)

Afternoon: Departure

- Make sure you have everything packed and check out of your accommodation. Head to the airport, allowing plenty of time for your flight.

Estimated Cost: \$50 (Transport to Airport)

Checklist:

- Passport and travel documents

- Pet essentials (water, snacks, leash)
 - Souvenirs and gifts
-

Travel Tips:

- Always carry a portable water bowl and snacks for your pet during outings.
- Learn a few basic Japanese phrases; locals appreciate the effort.
- Use public transport for efficient travel; it's pet-friendly in many areas.
- Keep some cash handy for small purchases, as not all places accept cards.
- April is cherry blossom season; check local forecasts for the best viewing spots.

Enjoy your adventure in Tokyo!

Safe travels!

The **Project: VALUE** Team

www.project-value.com

♥ **Support Project: VALUE**

Enjoyed your itinerary? Help keep this tool free and evolving with a small tip.

<https://ko-fi.com/projectvalue>